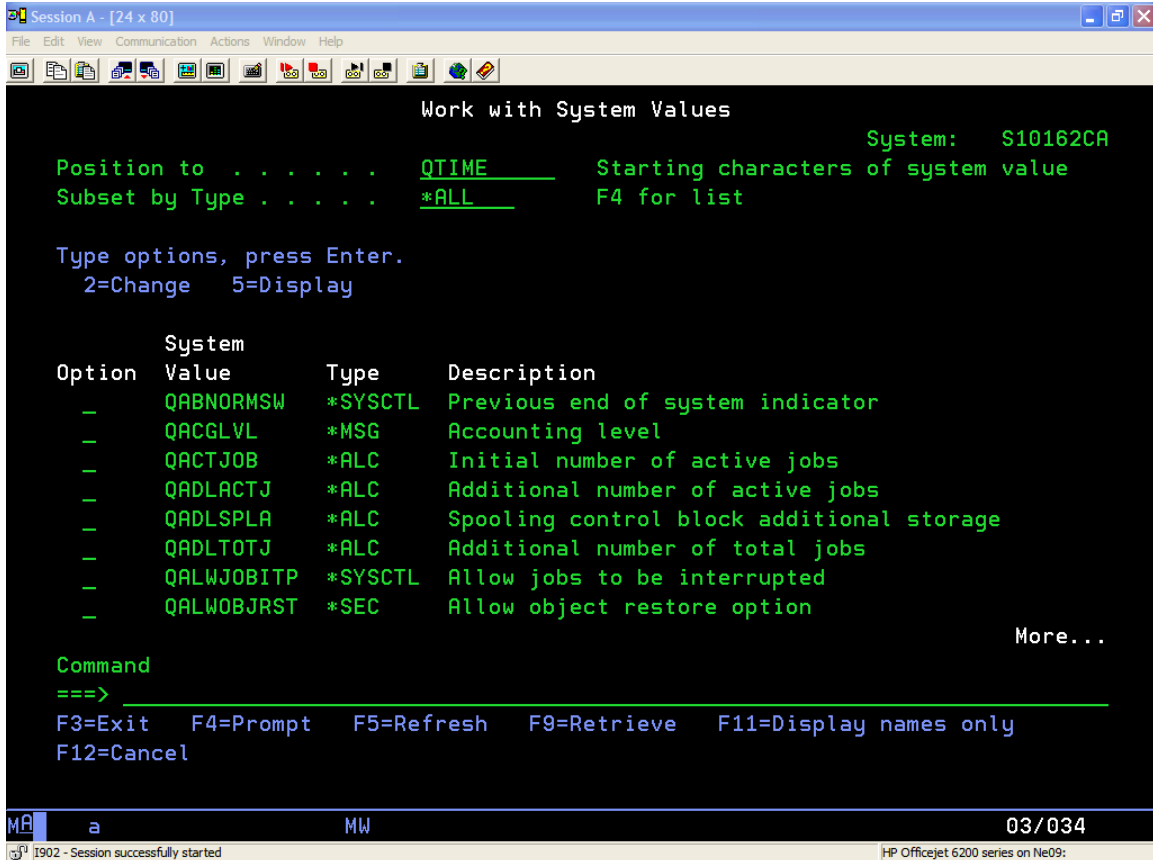




The screen below will be displayed. In the “Position to..” field enter “QTIME” and press the ENTER key.



Type the number 2 in the Option field next to QTIME and Press the ENTER key.

Work with System Values

System: S10162CA

Position to . . . . . \_\_\_\_\_ Starting characters of system value  
Subset by Type . . . . . \*ALL F4 for list

Type options, press Enter.  
2=Change 5=Display

Option	System Value	Type	Description
2	QTIME	*DATTIM	Time of day
-	QTIMSEP	*EDT	Time separator
-	QTIMZON	*DATTIM	Time zone
-	QTOTJOB	*ALC	Initial total number of jobs
-	QTSEPOOL	*STG	Time slice end pool
-	QUPSDLYTIM	*SYSCTL	Uninterruptible power supply delay time
-	QUPSMGQ	*SYSCTL	Uninterruptible power supply message queue
-	QUSEADPAUT	*SEC	Use adopted authority

More...

Command  
===> \_\_\_\_\_

F3=Exit F4=Prompt F5=Refresh F9=Retrieve F11=Display names only  
F12=Cancel

MA a MW 12/004

1902 - Session successfully started HP Officejet 6200 series on Ne09:

The screen below is displayed which allows you to change the system's time.

